

Child Development “The first 1000 days”

The holistic development from birth to 36 month old young child

With the significance placed on the first 1,000 days of a child’s life, understanding typical infant and child development is essential for anyone working with young children, and especially those interventionists, care workers and professionals working with children that have any form of disability, or special needs and barriers to learning. In this course, we discuss different theories and perspective of childhood development and then move on to discussing the different stages of development from birth up until 3 years old.

Course Facts



Course delivery

Online, digitised short course



Course duration

Ten weeks



Notional learning hours

5-7 learning hours per week, anytime, anywhere



B-BBEE

Assistance offered to obtain Category B recognition under Skills Development element of B-BBEE scorecard



Learner Journey Management

The Wits DigitalCampus team provide learning support throughout the course



Certification

A Certificate of Competence from the University of the Witwatersrand



Target market

Early intervention specialists, Allied health professionals and therapists, Doctors with early intervention practices, Teachers, Parents, Anyone working with or in contact with children that have any form of disability, or special needs and barriers to learning



Assessment

Assessment and grades are calculated as follows:
5% – Participation in Discussion Activity forums
35% – Module assessment results
60% – Online examination result



Course outcomes

Discuss foundations and core theories of infant and child development
Describe the holistic development in early childhood
Discuss socio-emotional development in toddlers

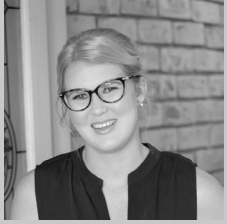


Learners who meet the assessment criteria will receive a Certificate of Competence from the University of the Witwatersrand Centre for Deaf Studies. A Certificate of Competence is proof that course content has been completed and learners have been assessed for competence against the learning outcomes set.

The holistic development from birth to 36 month old young child



Prof Claudine Storbeck is the Founder and Director of the Centre for Deaf Studies at the University of the Witwatersrand. She has been involved in issues surrounding Deaf Education and Deaf Studies for 27 years.



Caitlin Wakefield studied Audiology at UKZN, graduating in 2015. After completing her community service year, she joined KwaThintwa School for the Deaf as an Audiologist and has been working with preschool learners for the last four years.

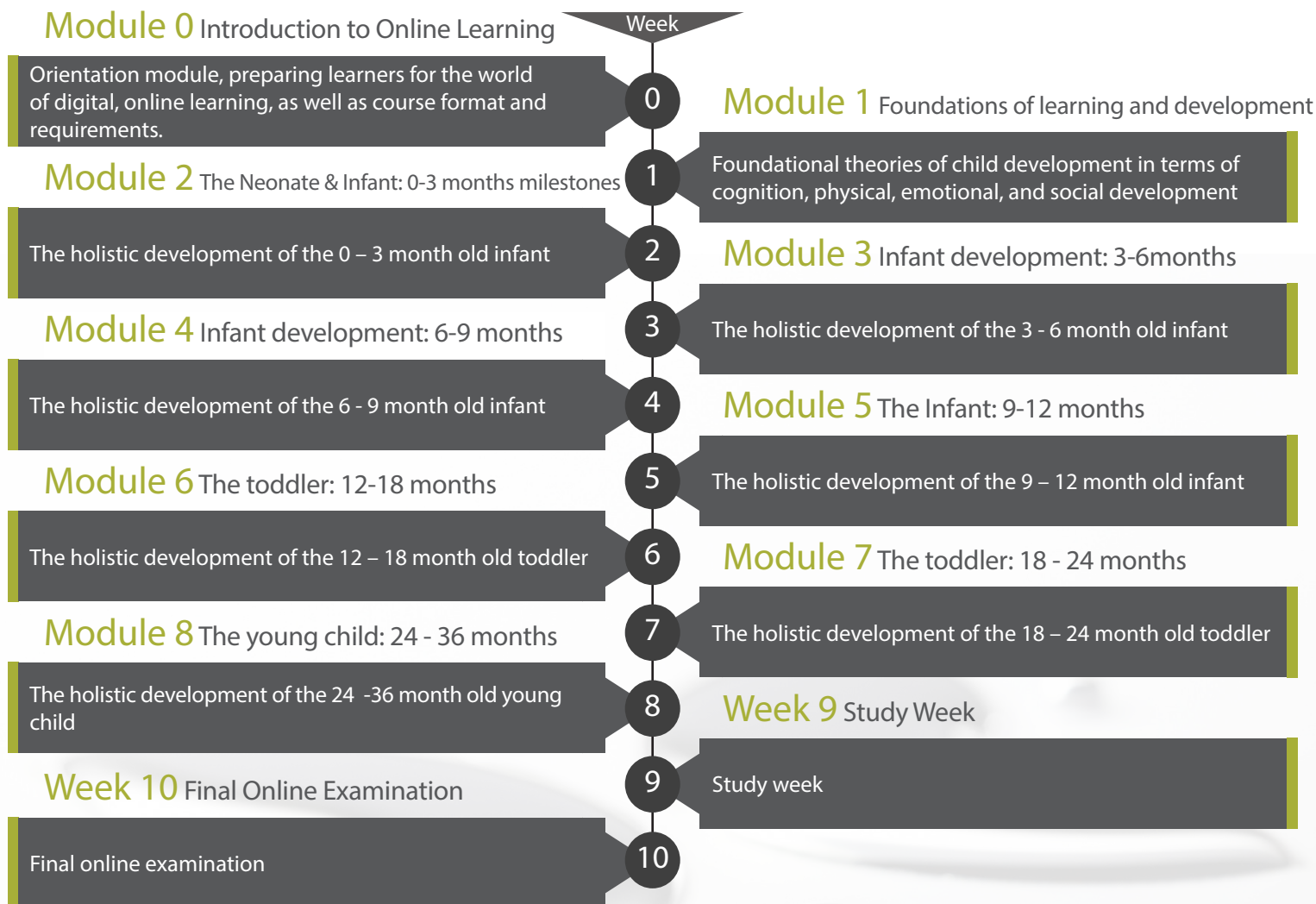
The Centre for Deaf Studies Introduction

The Centre for Deaf Studies aims to develop globally competitive standards of excellence in the training of teachers of the Deaf, provide equitable learning, and research in the field of Deaf Education.

In addition to working with teachers of the Deaf, we aim to equip parents of Deaf children, and the greater Deaf community with the necessary knowledge and skills to foster equal opportunities for the South African Deaf Community.

The holistic development from birth to 36 month old young child

Course Outline



Learner Journey Management

Our Wits DigitalCampus Learner Journey team will ensure that all applicants are enrolled, informed, supported and motivated to complete the course. The team can be contacted online, telephonically or by email and will respond to learner queries and comments within a working day.

Our effective Learner Journey Management is evident in these statistics across all our current courses:

Course completion rate:

97% plus

Course pass rate:

94% plus

Application & Payment Process

Apply online at www.digitalcampus.co.za

In accordance with Wits policies, upfront payment is required to register for the course. The payment of the fees for this course is the responsibility of the individual registering for the course.