

Governance & Ethics

Organisations form an integral part of the society in which they operate. Through their value and supply chains, as well as their stakeholder relationships, organisations can affect large numbers of people. What used to be regarded as ethical by society and business has shifted and continues to change. Managing these evolving expectations can only be achieved through good governance processes embedded within an ethical culture. Creating and managing an ethical culture for sustainable value creation underpins the King IV Code of Corporate Governance in South Africa specifically. It is therefore essential for individuals in organisations to contribute effectively to sound corporate governance, within their sphere of influence, in contemporary society. This course will enable individuals to contribute to building an ethical culture and manage risk in an organisation.

Course Facts



Course delivery

Online, digitised short course



Course duration

Eight weeks



Notional learning hours

5-7 learning hours per week, anytime, anywhere



B-BBEE

Assistance offered to obtain Category B recognition under Skills Development element of B-BBEE scorecard



Learner Journey Management

The Wits DigitalCampus team provide learning support throughout the course



Certification

A Certificate of Competence from the University of the Witwatersrand



Target market

Middle managers across all business disciplines and all business sectors

Newly appointed executives, and individuals with aspirations of an executive career path

General managers of organisations in the public and private sectors

Owners of businesses, including SMEs



Assessment

Assessment and grades are calculated as follows:

5% – Participation in Discussion Activity forums

35% – Module assessment results

60% – Online examination result



Course outcomes

Enable individuals in organisations to contribute effectively to corporate governance, within their sphere of influence, in contemporary society

To enable individuals to contribute to building an ethical culture in an organisation

To enable individuals to manage organisational matters affecting governance in the evolving context of business.



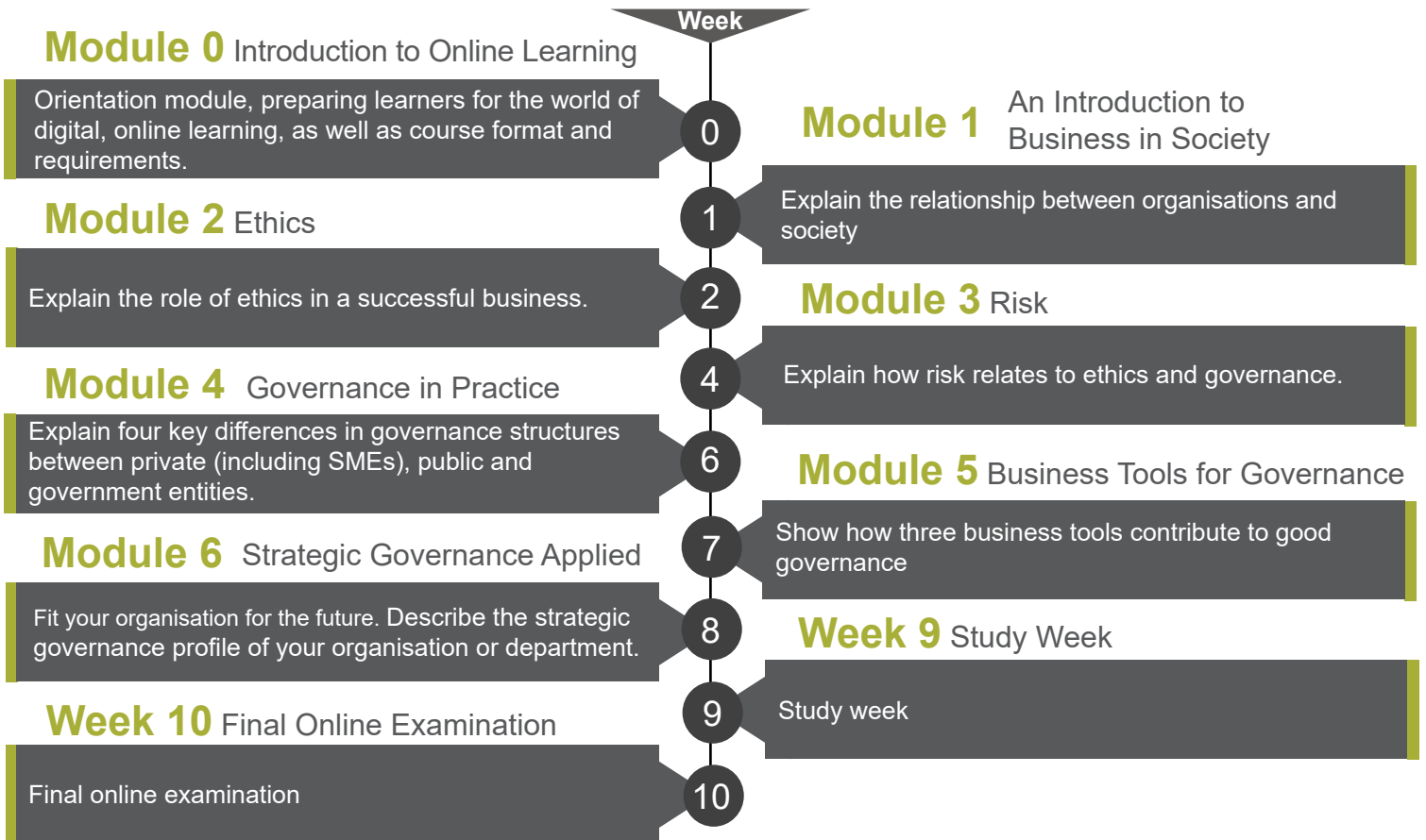
Learners who meet the assessment criteria will receive a Certificate of Competence from the University of the Witwatersrand's Wits Plus, Centre for Part-Time Studies. A Certificate of Competence is proof that course content has been completed and learners have been assessed for competence against the learning outcomes set.

Governance & Ethics



Julie Courtage is the lecturer and writer of this course. Following twenty years in operational and corporate roles, she has been an independent consultant, lecturer and facilitator for the past ten years. Her focus is on sustainable wellbeing at individual, corporate and societal levels. Applying technical understanding and personal development skills, she works with values-based complex decision-making (including ethics) for sustainable outcomes; business process, strategy and scenario facilitation; complex problem-solving; drivers and implementation of sustainable wellbeing; and the role of leadership and communication in achieving this.

Course Outline



Learner Journey Management

Our Wits DigitalCampus Learner Journey team will ensure that all applicants are enrolled, informed, supported and motivated to complete the course. The team can be contacted online, telephonically or by email and will respond to learner queries and comments within a working day.

Our effective Learner Journey Management is evident in these statistics:

DigitalCampus average course retention rate:

98% plus

DigitalCampus average course pass rate:

93% plus

Application & Payment Process

Apply online at www.digitalcampus.co.za

In accordance with Wits policies, upfront payment is required to register for the course. The payment of the fees for this course is the responsibility of the individual registering for the course.